

Jeopardy

Terminology	Guiding Principles	Educational Adequacy	Existing Conditions
<u>\$100</u>	<u>\$100</u>	<u>\$100</u>	<u>\$100</u>
<u>\$200</u>	<u>\$200</u>	<u>\$200</u>	<u>\$200</u>
<u>\$300</u>	<u>\$300</u>	<u>\$300</u>	<u>\$300</u>
<u>\$400</u>	<u>\$400</u>	<u>\$400</u>	<u>\$400</u>
<u>\$500</u>	<u>\$500</u>	<u>\$500</u>	<u>\$500</u>



Terminology - \$100

- What is the name of the Ohio State Agency that provides co-funding to school building projects?

- Ohio Facilities Construction Commission (OFCC)



Terminology - \$200

- These forecast the number of students expected in the next 10 years in schools and are the basis of master planning. Ours have historically declined and are currently being redeveloped by the OFCC.
- Enrollment projections



Terminology - \$300

- All schools in Ohio are co-funded by the OFCC based on their “xxxxxx xxxx”. Ours is ranked 379 which gives us 38% co-funding from the OFCC.
- Equity rank



Terminology - \$400

- When a district hasn't had an update to their assessment in a while, the state recommends another firm to come along and provide a "XXXXXXXXXX".
- Validation



Terminology - \$500

- The typical form of funding for large Ohio school construction projects is by means of placing a “xxxx xxxxx” on the ballot

- Bond issue



Guiding Principles - \$100

- “The hub of our community; committed to a culture of caring! We innovate. We create. We personalize education for all! This is our district’s “xxxxxxx xxxxxxxxxx”
- Vision Statement



Guiding Principles - \$200

- We cannot have community without “xxxxx”.

- Unity



Guiding Principles - \$300

- Our schools should strive for “xxxxxxxxxx” in all areas by providing lifelong learning opportunities.

- Excellence



Guiding Principles - \$400

- Our schools should be technology rich, functional and flexible to adapt to constant changes that occur, and be environmentally "xxxxxxxxxxxx".
- sustainable



Guiding Principles - \$500

- Our schools should ensure “xxxxxxxxxxx and xxxxxx” among the schools. Provide equitable education across and the district and bolster opportunities for collaboration, problem solving, community, commitment and creativity
- Commonality and Equity



Educational Adequacy - \$100

- This is the practice of placing windows, other openings, and reflective surfaces so that sunlight (direct or indirect) can provide effective internal lighting.
- Daylighting



Educational Adequacy - \$200

- We learned about how much space various learning areas have in each school. The overall square footages were also reviewed. This school is the smallest in our district in terms of overall space (SF).
- Elizabeth Price Elementary



Educational Adequacy - \$300

- We studied the design, layout and traffic circulation patterns of our school sites via google earth maps. This elementary school has the smallest site of all our district buildings, with little greenspace or room for expansion/rebuilding.
- DeWitt Elementary School



Educational Adequacy - \$400

- Most of our schools are designed with double loaded corridors, allowing the designs to feature daylight and provide good line of site in the corridors. This middle school is one of the few exceptions, featuring a compact box type design limiting daylighting opportunities.
- Roberts Middle School



Educational Adequacy - \$500

- Our schools should be XXXX XXX XXXXXX – defined as "the condition of being free from harm or risk," and "the quality or state of being free from danger"
 - (think of designed secure vestibules and restrooms designed to prohibit opportunities for bullying)
- Safe and/or Secure



Existing Conditions - \$100

- This school in our district is the oldest - constructed in 1922 and has over \$56 M in facility renovation needs. This school also has more square footage than the current enrollments need.
- Cuyahoga Falls High School



Existing Conditions - \$200

- This elementary school has an office located on a separate wing from the main entrance. It is the largest elementary school, has 3 stories, and also has the highest cost in renovation needs at almost \$14M.
- Lincoln Elementary School



Existing Conditions - \$300

- This school has a large open site but lacks a dedicated bus/car drop-off loop. There are issues with storm drains/flooding due to tree roots. There are many ADA challenges in this 2-story building that shares its site with another school.
- Bolich Middle School



Existing Conditions - \$400

- This school has settling occurring at the end of the northeast classroom wing. The gym and dining are a shared space and the school has \$8.5 M in renovation needs. This school serves the most southern area of the district.



- Preston Elementary School

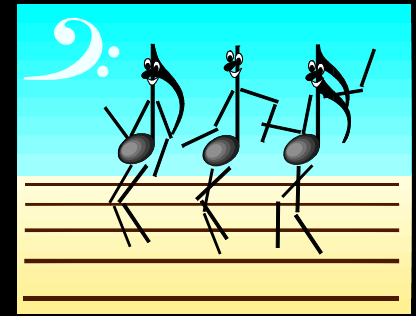


Existing Conditions - \$500

- This school has issues with temperature control throughout. There are ADA barriers and challenges throughout due to multiple floor level and 1/2 levels. The building and site are one of the smallest and oldest in the district.
- Silver Lake Elementary School



Final Jeopardy



- Our goal as a committee is to develop this – a long term solution for our facility needs.



- Time up!
- Master Plan

